



Spring 2015

Assemblyman
Ed Ra

825 East Gate Blvd
Suite 207
Garden City, NY 11530

(516) 535-4095
rae@assembly.state.ny.us

Dear Neighbor,

The 2015-16 Legislative Session has been a busy one, and as we continue our work here in Albany, I'd like to know what's important to you. Please take a minute to complete this survey and send it back. With your input, we can make our community an even better place to work, live and raise a family.

You can also take this survey electronically at: bit.ly/RaSurvey

Thank you in advance for your participation,

2015 LEGISLATIVE SURVEY

Please answer the following questions and mail your completed survey to Assemblyman Ed Ra at 825 East Gate Blvd, Suite 207, Garden City, NY 11530.

You can also take this survey online at: <http://bit.ly/RaSurvey>

1. What issues matter most to you? (check all that apply)

- Education
- Ethics reform
- Creating jobs
- Cutting taxes
- Energy prices
- Healthcare cost and availability

2. Do you feel Long Islanders receive a fair share of services for the amount of state and federal taxes we pay?

- Yes No

3. How satisfied are you with Gov. Andrew Cuomo's performance?

- Very satisfied
- Somewhat satisfied
- Neutral
- Somewhat dissatisfied
- Very dissatisfied

continued

4. How satisfied are you with the performance of the state Legislature?

- Very satisfied
- Somewhat satisfied
- Neutral
- Somewhat dissatisfied
- Very dissatisfied

5. Common Core should be...

- Eliminated and replaced
- Delayed and reformed
- Left alone

6. Do you think a teacher should be evaluated based on student test scores?

- Yes
- No

7. Do you support limiting or changing tenure for teachers?

- Yes
- No

8. What steps should we take to address corruption in state government? (check all that apply)

- Term limits for legislative leadership posts
- Stripping officials convicted of ethics violations of their state pension
- Campaign finance reform
- Eliminating member items

9. Do you agree that offering qualified businesses no business, corporate, sales, property, state or local taxes for 10 years is a way to promote economic growth?

- Agree
- Disagree
- I'm not sure

10. How can we create more jobs on Long Island? (check all that apply)

- Lower business taxes
- Lower taxes across the board
- Increase the minimum wage
- START-UP NY
- Long Island's business climate is fine

11. Do you support the DREAM Act, providing college tuition assistance to illegal immigrants?

- Yes
- No
- I'm not sure

12. What steps should be taken to combat the heroin epidemic?

- Earlier education on the dangers of heroin
- Harsher penalties for drug dealers
- Better insurance to help struggling users receive treatment
- Other _____

13. Are you satisfied with the new management of LIPA?

- Yes
- No
- I'm not sure

14. What issue do you believe is not being addressed enough by the state Legislature?

15. What sources do you use most often to receive your news?

- Network television
- Cable television
- Newspapers
- Online news sites
- Facebook
- Twitter
- Other _____

16. If given the choice, how would you like to receive updates from Assemblyman Ra?

- Mail
- Email
- Both

Be the first to know! Please provide your email to receive updates from Assemblyman Ed Ra:

Name: _____
Address: _____
City, State, Zip: _____

Place
First-Class
Stamp
Here

ASSEMBLYMAN ED RA
825 EAST GATE BLVD
SUITE 207
GARDEN CITY, NY 11530

This security panel is here to protect your name and information.

To reply, fold this panel out, add postage and secure with tape or use an envelope.

Alternatively, you may take the survey online.

ED RA
NEW YORK STATE ASSEMBLY

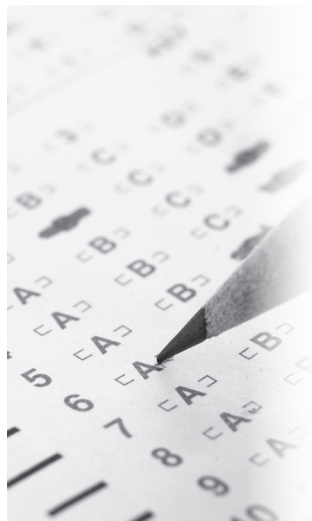
ED RA
NEW YORK STATE ASSEMBLY



Your Voice Matters!

A brief legislative survey

TIME SENSITIVE



Make your voice heard!

Complete this survey and connect with Ed Ra to discuss the latest news about your state government!

You can also take this survey online at:
<http://bit.ly/RaSurvey>